

A topographic map of North America, showing terrain elevation with colors ranging from green (low) to red (high). The map is the background for the top half of the page.

MapVault®

Geospatial Research Taken to the Next Level

Introducing MapVault®

A new streaming service that brings thousands of authoritative map series together in one experience

MapVault is a new subscription-based service that delivers immediate access to East View Geospatial's extensive raster map collection—the world's most comprehensive commercially-owned geospatial library.

Grow Your Collection

All scales. All languages. All countries. Current and historical. Federal government, local government, military and commercially published. With its diverse collection of topographic, aeronautical, nautical and geological map series, MapVault has it all.

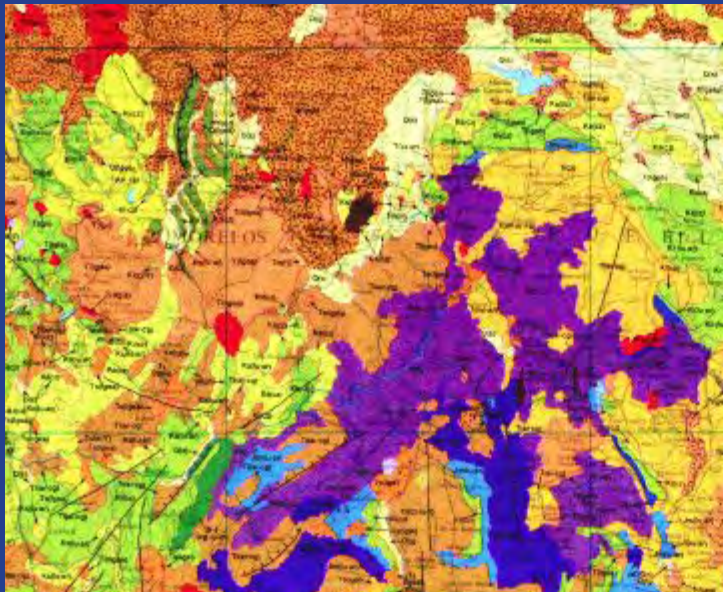
Explore With Ease

With MapVault, we've taken the time and cost out of tiling entire map series, delivering users a fast, easy and accessible environment in which to discover and utilize maps. Robust metadata, including individual sheet-level metadata, makes finding the right maps a breeze, while the seamlessly mosaicked tilesets make for easy navigation without loading delays.

Reach More Users

MapVault was designed with a wide variety of users in mind. The intuitive interface is easy to use for GIS and non-GIS specialists alike, and users can view data via a variety of options, including desktop applications, the internet, and multiple GIS software platforms.

MapVault provides access to 500,000+ georeferenced map sheets—without the costs of procuring, storing and digitizing physical maps



Why MapVault?

- ↪ Quick and easy access to an extensive GIS library of thousands of topographic, aeronautical, nautical and geological map series, with new series added each month (visit geospatial.com/learn/MapVault/ for the latest title list)
- ↪ No need to go to the map library—users can access MapVault through the convenience of their own web browser, or download data into programs such as ArcGIS and QGIS
- ↪ Robust metadata for all MapVault map series ensures easy discovery while encouraging broader use of your existing geospatial holdings
- ↪ Flexible viewing options and intuitive interface make geospatial data more approachable to general users
- ↪ GIS and non-GIS specialists alike can use MapVault to enhance their research and add value to projects, presentations and publications
- ↪ Tiered pricing makes subscribing affordable, while the option to subscribe to single map series or large packages of related series lets you customize MapVault to suit your specific needs. East View Geospatial also offers solutions for adding your own resources to the MapVault platform—contact us at geospatial@eastview.com for more details.

Get started exploring MapVault!

Visit geospatial.com/learn/MapVault for more information or email geospatial@eastview.com to request a free trial.



10601 Wayzata Blvd
Minneapolis, MN 55305-1515 USA
geospatial.com
geospatial@eastview.com
tel. +1.952.252.1205

From MapVault (from top): NZTopo50 (New Zealand), 464 sheets, published 2009-2017; Carta Geologica (Mexico), 1:1,000,000 scale, 8 sheets, published 1981-1989; World Aeronautical Chart/Lugvaartkunde Wereldkaart 1:1 000 000 ICAO/IBLO (South Africa), 16 sheets, published 1998-2009